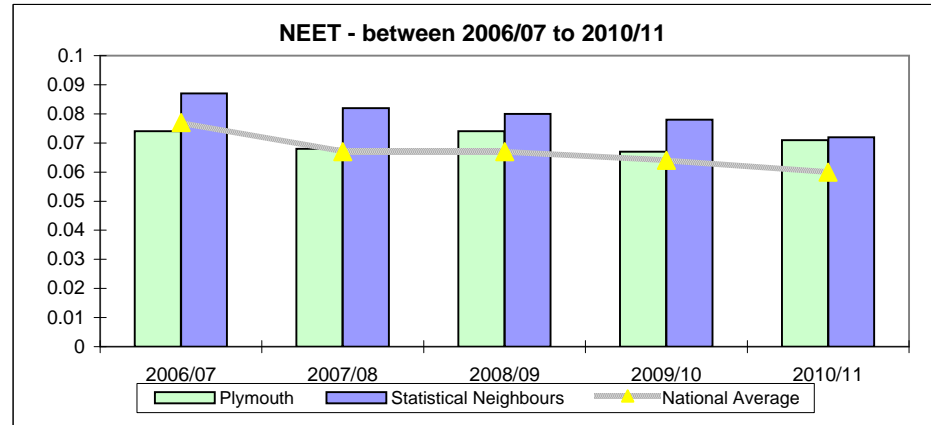


NEET (Not in Education, Employment or Training)

NEET - between 2006/07 and 2010/11

	Data					Target		
	2006/07	2007/08	2008/09	2009/10	2010/11	2011/12	2012/13	2013/14
Plymouth	7.4%	6.8%	7.4%	6.7%	7.1%	5.3%	4.8%	3.9%
Statistical Neighbours	8.7%	8.2%	8.0%	7.8%	7.2%			
National Average	7.7%	6.7%	6.7%	6.4%	6.0%			
South West	6.0%	5.5%	5.7%	5.6%	5.3%			



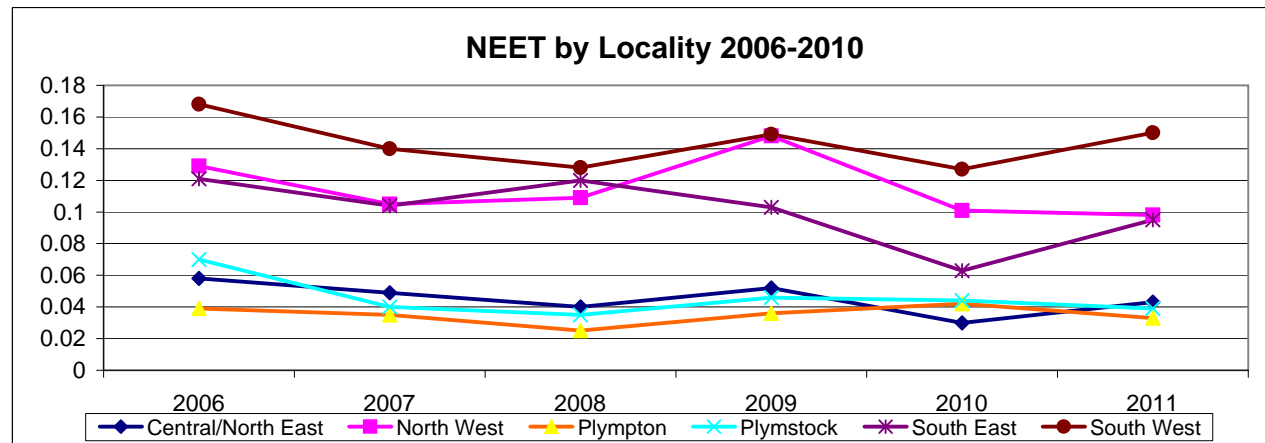
NEET - Quarterly between 2009/10 and 2010/11

Quarter	Actual	Target
QTR1 2009/10	9.0%	6.1%
QTR2 2009/10	8.3%	6.1%
QTR3 2009/10	6.6%	6.1%
QTR4 2009/10	6.5%	6.1%
QTR1 2010/11	6.5%	5.8%
QTR2 2010/11	8.2%	5.8%
QTR3 2010/11	6.6%	5.8%
QTR4 2010/11	7.4%	5.8%
QTR1 2011/12	8.1%	5.3%

* E Perform

NEET - Locality Breakdown	Jun-2006	Jun-2007	Jun-2008	Jun-2009	Jun-2010	Jun-2011
Central/North East	5.8%	4.9%	4.0%	5.2%	3.0%	4.3%
North West	12.9%	10.5%	10.9%	14.8%	10.1%	9.8%
Plympton	3.9%	3.5%	2.5%	3.6%	4.2%	3.3%
Plymstock	7.0%	4.0%	3.5%	4.6%	4.4%	3.9%
South East	12.1%	10.4%	12.0%	10.3%	6.3%	9.5%
South West	16.8%	14.0%	12.8%	14.9%	12.7%	15.0%
Plymouth	9.2%	7.9%	7.5%	9.2%	6.5%	(8.9%)

Source: Careers South West 13/09/11



Beware that these figures were published in September 2011 and are provisional. DfE will publish soon (before December) new figures.

STATISTICAL NEIGHBOURS	16-18 year olds known to the Local Authority [2]	16-18 year olds NEET [3] [4]		% 16-18 yr olds whose activity is not known
		Estimated number	%	
Plymouth	9,063	640	7.1%	1.5%
Isle of Wight	4,067	230	5.7%	5.2%
Portsmouth	3,887	440	11.3%	8.6%
Southampton	5,981	590	9.8%	5.7%
Rotherham	10,644	700	6.6%	3.1%
Sheffield	15,330	1,350	8.8%	5.8%
Peterborough	6,340	500	7.9%	1.3%
Southend	8,098	410	5.1%	2.6%
Telford and Wrekin	5,880	460	7.8%	7.0%
Bournemouth	4,531	200	4.3%	1.5%
Torbay	5,302	220	4.2%	1.0%
statistical neighbours with Plymouth	79,123	5,740	7.3%	
statistical neighbours WITHOUT Plymouth	70,060	5,100	7.3%	

Notes

- [1] 2010 data are an average at the end of November 2010, December 2010 and January 2011. They include all young people known to the local authority who were aged 16, 17 or 18 at that time.
- [2] The number of 16-18 year olds known to the local authority includes those who are attending school or college in the local authority area, regardless of where they reside
- [3] 16-18 year olds known to be undertaking a Gap year, or in custody, are not recorded as NEET
- [4] The number and % of 16-18 year olds NEET has been adjusted to assume a proportion of those whose current activity is not known are NEET
- [5] Local authority figures cannot be compared with the DfE estimate of the proportion of young people NEET as they relate to the actual age (rather than academic age) of the young person, and use different definitions.
- [6] Rutland County Council did not provide data

Beware that these figures were published in September 2011 and are provisional. DfE will publish soon (before December) new figures.

SOUTH WEST	16-18 year olds known to the Local Authority [2]	16-18 year olds NEET [3] [4]		% 16-18 yr olds whose activity is not known
		Estimated number	%	
South West Region	156,379	8,290	5.3%	2.8%
Bath & NE Somerset	5,503	190	3.4%	2.7%
Bournemouth	4,531	200	4.3%	1.5%
Bristol	10,941	820	7.5%	4.1%
Cornwall	16,825	930	5.5%	1.0%
Devon	20,316	1,260	6.2%	1.4%
Dorset	11,135	660	5.9%	2.0%
Gloucestershire	18,552	590	3.2%	2.1%
Isles of Scilly	-	-	0.0%	0.0%
North Somerset	5,560	220	4.0%	1.6%
Plymouth	9,063	640	7.1%	1.5%
Poole	4,589	240	5.3%	2.0%
Somerset	16,054	690	4.3%	7.3%
South Gloucestershire	9,055	340	3.7%	1.8%
Swindon	7,102	440	6.2%	7.0%
Torbay	5,302	220	4.2%	1.0%
Wiltshire	11,848	810	6.8%	3.7%

Notes

- [1] 2010 data are an average at the end of November 2010, December 2010 and January 2011. They include all young people known to the local authority who were aged 16, 17 or 18 at that time.
- [2] The number of 16-18 year olds known to the local authority includes those who are attending school or college in the local authority area, regardless of where they reside
- [3] 16-18 year olds known to be undertaking a Gap year, or in custody, are not recorded as NEET
- [4] The number and % of 16-18 year olds NEET has been adjusted to assume a proportion of those whose current activity is not known are NEET
- [5] Local authority figures cannot be compared with the DfE estimate of the proportion of young people NEET as they relate to the actual age (rather than academic age) of the young person, and use different definitions.
- [6] Rutland County Council did not provide data